

## **Lockdown Self Test Instructions**

**Instructions to wake unit up, conduct self test, put back to sleep.**

1. Using a paperclip, push the reset button through the pinhole.
2. Press the pairing button 3 times to put it into self test.
3. Press once to lock
4. Press once to unlock

**If the lock fails either step 3 or 4 please make note and set the unit aside and proceed to step 9.**

**For the units that passed continue to step 5 to put the unit to sleep for shipping.**

5. Press in the pairing button and hold it in the down position.
6. While holding the pairing button in the down position, press and release the reset button through the pin hole with a paperclip. Then release the pairing button.
7. To test if the unit went back to sleep, raise the lift gate. If it doesn't beep the sleep function works. If it beeps repeat step 5 and 6.
8. To lower the gate press down on the far left or right side. It is the same pressure as hole punching about 30 pieces of paper.

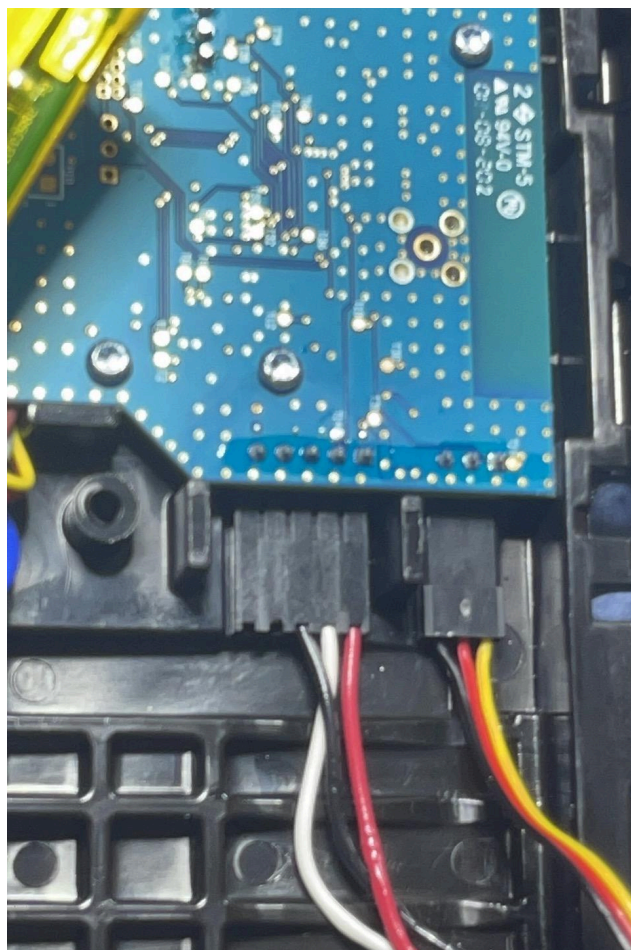
You can watch a video here demonstrating this

**If unit failed self test proceed to the following steps to remove the electronics housing.**

9. Remove the electronics housing from the mounting points.



Once the housing is removed, remove the backplate to expose the board and make sure that the two connectors are attached in the format shown below.



When the connectors are reattached, reassemble the board to the housing and run the self test again to see if the issue has been resolved. Take care to run the

accessory cable and battery so that there is no binding or bunching of the battery and the cable in the housing.

If the unit is still having issues the magnetic sensor adjustment instructions needs to be followed. This video can be viewed [here](#).

If the unit has correctly completed its self test return to step 5 after you reassemble the unit.

Your lock should now be good to install onto the door.